

**VOTE**

**YOUR VOTE MATTERS**

Use this guide to cast yours.

**VOTE**

**VOTE**

**VOTE**

**VOTE**

**VOTE**

**3RD, 2020**  
**VOTE BY**  
**NOVEMBER**  
**3RD, 2020**

**VOTE BY**  
**NOVEMBER**  
**3RD, 2020**

**VOTE BY**  
**NOVEMBER**  
**3RD, 2020**

**VOTE BY**

## Table of Contents

---

04-05	<b>WHY SHOULD I VOTE?</b>
06-07	<b>CAN I REGISTER TO VOTE?</b>
08-11	<b>HOW DO I REGISTER TO VOTE FOR THE ELECTION ON NOVEMBER 3RD, 2020?</b>
12-17	<b>HOW DO I VOTE?</b>
18-23	<b>HOW DO I FIND MY CLERK?</b>
24-25	<b>CAN I REGISTER TO VOTE IF I'VE BEEN CONVICTED OF A CRIME?</b>
24-25	<b>CAN I REGISTER TO VOTE IF I'M HOMELESS?</b>
26-29	<b>WHO WILL BE ON THE BALLOT?</b>
30-33	<b>DO I NEED A PHOTO ID TO VOTE?</b>
34-35	<b>WHAT IF I NEED ASSISTANCE ON ELECTION DAY?</b>
36-39	<b>WHAT IS (866) OUR-VOTE?</b>

Call the nonpartisan Election Protection hotline at **866-OUR-VOTE** (866-687-8683) if you have questions about how to register, how to vote, or if you experience any problems trying to register or vote.

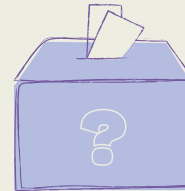
**I VOTE?  
WHY  
SHOULD  
I VOTE?  
WHY  
SHOULD  
I VOTE?  
WHY  
SHOULD  
I VOTE?  
WHY**

## **Why should I vote?**

---



Elected officials make some of the most important decisions that impact our daily lives—from ensuring you drink safe water to determining if someone should go to prison and for how long. Your vote is important. Voting is an opportunity to shape the present and the future of your community. Vote for candidates who you believe are best prepared to serve your needs and the needs of your community.



**TO VOTE?**

**CAN I  
REGISTER  
TO VOTE?**

**CAN I  
REGISTER  
TO VOTE?**

**CAN I  
REGISTER  
TO VOTE?**

**CAN I**

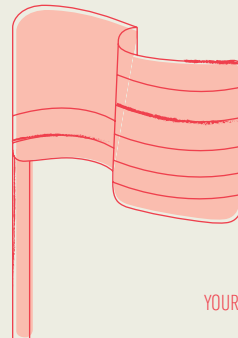
## **Can I register to vote?**

---



You must register in order to vote in Michigan. You can register at any time up to 8 p.m. on Election Day, but it is better to register as soon as possible. You can register and vote in Michigan if:

- You are a U.S. citizen.
- You are a resident of a city or township in Michigan for at least 30 days (or will be by Election Day).
- You are at least 17.5 years old and will be 18 years old by Election Day and
- You are not currently serving a sentence in jail or prison.



TO VOTE?  
HOW DO I  
REGISTER  
TO VOTE?  
HOW DO I  
REGISTER  
TO VOTE?  
HOW DO I  
REGISTER  
TO VOTE?  
HOW DO I

## How do I register to vote for the election on Nov. 3rd, 2020?

---



Prior to October 20, 2020, you have many ways to register to vote:

- Online at: [Michigan.gov/VoterRegistration](https://Michigan.gov/VoterRegistration)
- At a Secretary of State branch office.
- At your city/township clerk's office or your county clerk's office.
- At any state agency that provides public assistance or services to people with disabilities.
- By mailing in a completed voter registration application postmarked by October 19, 2020. You can download a voter registration application at: [Michigan.gov/vote](https://Michigan.gov/vote)

If you register to vote before October 20, 2020, you will not need to provide “proof of residency.” Information for registering after October 20, 2020 is on the next page.

## HOW DO I REGISTER?

→ **Starting on October 20, 2020 and through 8 p.m. on November 3, 2020,** you have one way to register to vote:

- Visit your city/township clerk's office and provide "proof of residency."

## → WHAT IS "PROOF OF RESIDENCY"?

"Proof of residency" is a document with your name and current address in the city/township where you live. Paper or electronic copies of any of the following documents will work:

- A Michigan driver's license or state ID card.
- A utility bill.
- A bank statement.
- A paycheck.
- A government check.
- Any other government document.

## → WHAT IF I AM ALREADY REGISTERED BUT I MOVED?

You can update your registration at your city/township clerk's office with proof of residency until 8 p.m. on Election Day.

You can also vote at your old polling place one last time if:

- You moved within the same city or township.
- You moved to a different city or township after September 4, 2020.

HOW DO  
I VOTE?

HOW DO  
I VOTE?

HOW DO  
I VOTE?

HOW DO  
I VOTE?

HOW DO  
I VOTE?

## How do I vote?

---

In Michigan, you have several options for how to cast your ballot. Select a plan that works best for you, your family and your schedule.



### **YOU CAN VOTE EARLY AT YOUR CLERK'S OFFICE.**

Starting on September 24, 2020 and through 4 p.m. on November 2, you can go to your city/township clerk's office to apply for your absentee ballot, fill it out, sign it and cast your vote all in one visit. If you need to register to vote, you can do that too. In addition to your city/township clerk's office, many communities have additional satellite offices where you can go to register and/or to vote. See "How do I find my clerk?" on page 19.



### YOU CAN VOTE EARLY FROM HOME.

Instead of going into your local clerk's office, you can request that your ballot be mailed to you. To receive your ballot by mail, you need to fill out an application for an absentee ballot. You can fill out an application online at [Michigan.gov/vote](https://www.michigan.gov/vote) (click on "vote at home"). You can download and print an application form from [Michigan.gov/vote](https://www.michigan.gov/vote) (click on "vote at home") and mail it to your city/township clerk. Or you can call your local clerk and ask them to mail you an application.

When you receive your absentee ballot in the mail, fill it out, sign it and mail it back to your local clerk's office as soon as possible. Starting on October 20, 2020, to make sure your completed ballot is received in time, drop it off in person at your city/township clerk's office or a dropbox provided by your clerk, instead of mailing it in.



### VOTE ON ELECTION DAY AT YOUR POLLING PLACE.

If you would like to vote on Election Day, and you are already registered to vote at your current address, you must vote at your assigned polling location. To find your polling location visit [Michigan.gov/vote](https://www.michigan.gov/vote), call your local clerk or call the nonpartisan Election Protection hotline at 866-OUR-VOTE (866-687-8683).

If you need to register to vote or update your registration address, you can do so until 8 p.m. on Election Day at your city/township clerk's office.

You will need to provide "proof of residency" (see page 10). After you register or update your registration address, you can either vote absentee at the clerk's office or, if there's time, you can go vote at your polling place.





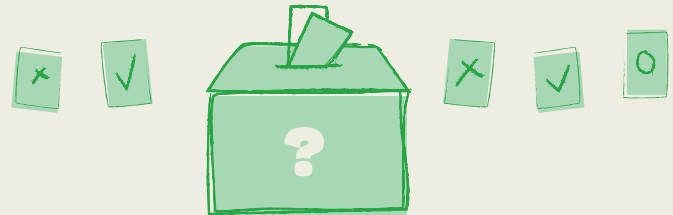
## WHAT SHOULD I DO IF I REQUESTED AN ABSENTEE BALLOT BUT NEVER RECEIVED IT?

Visit your city/township clerk's office as soon as possible but no later than Saturday, October 31, 2020 to cancel your first absentee ballot and request a new one.



## WHAT IS AN ABSENTEE BALLOT?

An absentee ballot is a ballot completed before Election Day, either at your local clerk's office or at home. In Michigan, any registered voter can vote by absentee ballot.



# CLERK?

# HOW DO I FIND MY CLERK?

# HOW DO I FIND MY CLERK?

# HOW DO I FIND MY CLERK?

# HOW DO I

## How do I find my clerk?

---



### WHO IS THE CLERK?

City and township clerks maintain the voter registration records for your community and are responsible for administering all elections.

City and township clerks register voters, distribute absentee ballots to voters, and they manage polling locations, among many other things. Township clerks are elected. City clerks can be elected or appointed.

If you have access to the internet, you can look up your local clerk's location and office hours at [Michigan.gov/vote](https://www.michigan.gov/vote). Click on the "Your Clerk" tab on the left.

If you don't have access to the internet, call your city or township clerk's office to find out their address and hours of operation.

**STICKER**

**I VOTED  
STICKER**

**I VOTED  
STICKER**

**I VOTED  
STICKER**

SHARE A PHOTO OR MESSAGE ON SOCIAL MEDIA  
TO ENCOURAGE OTHERS TO VOTE EARLY USING  
**#MIVOTING**

## HOW DO I FIND MY CLERK?



Some cities across the state have opened satellite clerk offices where you can register to vote and vote. To find a satellite office near you, please call your city/township clerk or (866) OUR-VOTE / (866) 687-8683.

- I. DETROIT**  
**CONTACT THE DETROIT CLERK:**  
(313) 876-0190  
2978 W. Grand Blvd, Detroit
- II. PONTIAC**  
**CONTACT THE PONTIAC CITY CLERK:**  
(248) 758-3200  
47450 Woodward Ave, Pontiac
- III. FLINT**  
**CONTACT THE FLINT CITY CLERK:**  
(810) 766-7414  
1101 S. Saginaw St., Flint, Second Floor
- IV. MUSKEGON / MUSKEGON HEIGHTS**  
**CONTACT THE MUSKEGON CITY CLERK:**  
(231) 724-6705  
933 Terrace St., Muskegon  
**CONTACT THE MUSKEGON HEIGHTS CITY CLERK:**  
(231) 733-8820  
2724 Peck St., Muskegon Heights
- V. BENTON HARBOR**  
**CONTACT THE BENTON HARBOR CITY CLERK:**  
(269) 927-8408  
200 E. Wall St., Benton Harbor

**IF...  
CAN I  
REGISTER  
IF...  
CAN I  
REGISTER  
IF...  
CAN I  
REGISTER  
IF...  
CAN I**

## **Can I register to vote if I have been convicted of a crime?**

---

**Yes.** The only time you cannot register and vote is when you are serving a sentence in jail or prison.

You can register and vote:

- If you are in jail but have not been sentenced.
- If you are serving a sentence but are not in jail or prison.
- If you are on probation or parole but are not in jail or prison.
- If you served your sentence and are no longer in jail or prison.

## **Can I register to vote if I am homeless?**

---

**Yes.** You can register to vote using a street corner, park, shelter or any other place where you usually stay as your address. You can describe the location using two cross-streets. It is helpful, but not required, to have a mailing address. The address can be a local shelter, advocacy organization, outreach center or someone who will accept mail for you.

# BALLOT?

# WHO WILL BE ON THE BALLOT?

# WHO WILL BE ON THE BALLOT?

# WHO WILL BE ON THE BALLOT?

# WHO WILL

## Who will be on the ballot?

---

In addition to President and Vice President of the United States and some additional local races, the following positions will appear on your ballot for the Nov. 3 election:

### **1. UNITED STATES SENATOR**

You have two U.S. senators elected to represent all Michigan residents in Congress. Each U.S. senator serves a 6-year term. One U.S. senator position is on the ballot this year.

### **2. REPRESENTATIVE IN CONGRESS**

You elect your U.S. representative to serve in the U.S. House of Representatives in Congress for 2 years. They serve you and the residents in your specific congressional district, which is based on where you live.

## WHO WILL BE ON THE BALLOT?

### 3. REPRESENTATIVE IN STATE LEGISLATURE

You elect one state representative to represent you in the Michigan House of Representatives for 2 years. They serve you and the residents who live in your specific house district, which is based on where you live.

### 4. MICHIGAN SUPREME COURT JUSTICE

The Supreme Court consists of seven justices who are elected to 8-year terms. The Michigan Supreme Court is the highest court in Michigan. Two state-wide judgeship positions are on the ballot this year.

### 5. COUNTY PROSECUTING ATTORNEY

County Prosecutors are high ranking law enforcement officers. Prosecutors determine the policies and procedures that dictate how cases are prosecuted, how diversion programs are implemented, how plea deals are negotiated and what charges to bring against someone accused of committing a crime. You will elect your county prosecutor to a 4-year term.

### 6. SHERIFF

County Sheriffs are high ranking law enforcement officers in your county and they also manage your county's jail. You will elect your county sheriff to a 4-year term.

### 7. COUNTY CLERK

County clerks are involved in administering elections, including distributing ballots and other election supplies to local city and township clerks. They also keep public records like property deeds, marriage licenses and ordinances. You will elect your county clerk to a 4-year term.

### 8. COUNTY TREASURER

County treasurers are responsible for all county funds and are responsible for the collection of delinquent property taxes. This includes the foreclosure and sale of property for the non-payment of taxes. You will elect your county treasurer for a 4-year term.

Before you vote, research the candidates on your ballot to help you decide who you want to elect. You can preview who is on your ballot on the Michigan Voter Information Center at [Michigan.gov/vote](https://www.michigan.gov/vote).

**TO VOTE?**  
**DO I NEED**  
**A PHOTO ID**  
**TO VOTE?**  
**DO I NEED**  
**A PHOTO ID**  
**TO VOTE?**  
**DO I NEED**  
**A PHOTO ID**  
**TO VOTE?**  
**DO I NEED**

## **Do I need a photo ID to vote?**

---



**No.** But if you have it, bring it with you and provide it to the poll worker. You will be asked for a photo ID when you go vote. If you do not have a photo ID or do not have one with you, you can sign a simple form called an affidavit and vote.



## DO I NEED A PHOTO ID?

- A small number of first-time voters who registered through the mail or a voter registration drive may need to provide some documentation to vote.

Electronic or paper copies of any of the following will work:

- **A PHOTO ID WITH YOUR NAME AND PICTURE REGARDLESS OF THE ADDRESS OR IF IT HAS AN ADDRESS**
  - Driver's license or personal ID card from any state.
  - High school or college ID.
  - Passport.
  - Military or government-issued photo ID.
  - Tribal ID card.

- **A NON-PHOTO ID WITH YOUR NAME AND CURRENT ADDRESS ON IT**

- Current utility bill.
- Bank statement.
- Paycheck stub.
- Government check. Any other government document.



**VOTING**  
**I NEED**  
**ASSISTANCE**  
**VOTING**  
**I NEED**  
**ASSISTANCE**  
**VOTING**  
**I NEED**  
**ASSISTANCE**  
**VOTING**  
**I NEED**

## **What if I need assistance on Election Day?**

---

You have the right to vote independently using an accessible absentee ballot or voting machine. If you would like to use an accessible voting machine, tell an election official when you arrive to vote, either at the polls or—if before Election Day—at your local clerk’s office. If you are blind or otherwise disabled and would like to vote absentee from home, you can request an accessible absentee ballot at [Michigan.gov/vote](https://www.michigan.gov/vote) (click on “accessible voting”).

You have the right to assistance from the election officials. You can ask the election officials for instructions on how to use the voting equipment or assistance at any time, even after you enter the voting booth.

If you are blind, disabled, unable to read or write, or you do not read or write English, you have the right to assistance from anyone you choose. However, the person cannot be your employer, an agent of your employer or an officer or agent of your labor union.

866-OUR-VOTE  
866-OUR-VOTE  
866-OUR-VOTE  
866-OUR-VOTE  
866-OUR-VOTE  
866-OUR-VOTE  
866-OUR-VOTE  
**866-687-8683**  
866-OUR-VOTE  
866-OUR-VOTE  
866-OUR-VOTE  
866-OUR-VOTE  
866-OUR-VOTE  
866-OUR-VOTE  
866-OUR-VOTE

## What is **866-OUR-VOTE**

---



You can call (866) OUR-VOTE / (866) 687-8683 if you have voting questions or need voting-related assistance. Trained, legal and nonpartisan volunteers are ready to answer your questions and help you navigate any challenges you may face while registering to vote or casting your vote.



Some questions that they can help with include, but are not limited to:

- Am I eligible to vote?
- What should I do if I was unable to vote because I didn't have an ID?
- I don't trust voting by mail. What are my other options?
- I have a felony. Can I vote?
- Can I wear a candidate t-shirt to show my support while voting?
- Where do I go to vote?
- Can I vote if I'm homeless?
- What if my polling location is closed?
- What is "proof of residency"?
- Do I need a photo ID to register to vote?
- What should I do if I haven't received my absentee ballot yet?
- What if there's a line at my polling location?
- I want to vote, but I have to work on Election Day. What are my options?



Call the nonpartisan Election Protection hotline for assistance at any time. If you need to leave a message, be sure to include your phone number, so a volunteer can return your call.

For assistance in English, call 866-OUR-VOTE (866-687-8683).

Para recibir ayuda en español, llama a 888-VE-Y-VOTA (888-839-8682).

للمساعدة باللغة العربية، اتصل على:  
844-YALLA-US (844-925-5287)

For assistance in Bangla, Cantonese, English, Hindi, Korean, Mandarin, Tagalog, Urdu or Vietnamese, call 888-API-VOTE (888-274-8683).

For additional information or questions, visit [MichiganVoting.org](https://MichiganVoting.org) or email [questions@michiganvoting.org](mailto:questions@michiganvoting.org)



# VOTE



## ABSENTEE

# VOTE



## FROM HOME

# VOTE



## EARLY

# VOTE



## AT YOUR POLL

This guide was created by the team at [MichiganVoting.org](https://MichiganVoting.org) for you, the voters of Michigan. We believe in the importance and power of your vote and your voice.